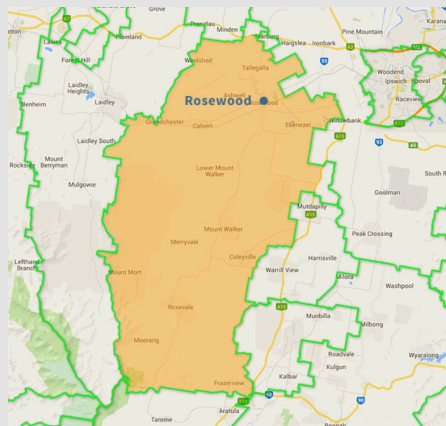


BREMER VALLEY

Connect your **business** with the **community**



The region's most popular community newspaper **The Moreton Border News** offers local businesses the opportunity to get their message into homes with their advertising message alongside the latest unique local news, sport results, local information and special features on topics of interest to locals.



Covering the following towns :

- Boonah
- Flinders View
- Harrisville
- Marburg
- Peak Crossing
- Ripley
- Rosewood
- Walloon
- Willowbank
- Yamanto



Rosewood's first choice for local news

The **FREE** community newspaper **The Moreton Border News** continues to connect readers with trusted local journalism and vibrant community events across the Bremer Valley region.

Covering a fast-growing corridor built on tourism, agriculture and mining, the paper reflects the heartbeat of rural towns and expanding residential communities. From local markets to school fetes and council news, it keeps residents informed and engaged.

With circulation reaching Rosewood and surrounding districts, the newspaper supports local manufacturing, retail and primary industries while showcasing the lifestyle opportunities of the region. Published as a handy A4 sized publication, it is popular with locals.

Positioned between Ipswich and Brisbane, the area offers rural charm with easy metropolitan access, making the **Moreton Border News** an essential voice for its growing community.

FREE PUBLICATION - PUBLISHED FRIDAY'S FORTNIGHTLY - ONLINE 24/7

Weekly total audience figure of:

22,272*

20,010 Print/Digital edition readers
641** Weekly website page views
2123 Social followers

*SOURCE: Combination of estimated readership of print and digital editions as at 18 December 2025; Google Analytics - relevant newspaper web page views (**Limited data available) and Facebook Insights - relevant newspaper facebook page followers (as at 18 December 2025).

A choice for all ages & incomes

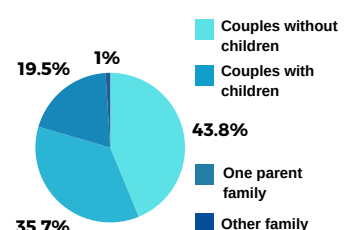
OCCUPATIONS

Labourers: 13.4%
Professionals: 11.9%
Community Personal Services: 14.1%
Technicians & Trades: 16.6%
Managers: 12%
Clerical & Admin: 12.5%
Sales Workers: 7.6%
Machinery Operators: 9.8%

AGE

UNDER 34 40.8%
35-49 17.6%
50-64 21.3%
65+ 20.2%

HOUSEHOLD TYPE



Please Note: This information was compiled based on our understanding of our readers and information obtained by the **Moreton Border News** from the 2021 Census data in relation to the Rosewood region, covered by the **Moreton Border News**. It is a snapshot of the region and Today News Group expects you to rely on your own commercial judgement when using this information.

Print Advertising Deadlines

Display Advertising

Booking Deadline: Friday 10am prior
Material Deadline: Tuesday 12 Noon prior

Classified and Trades Advertising

Deadline: Tuesday 12 Noon prior
Material Deadline: Tuesday 12 Noon prior

